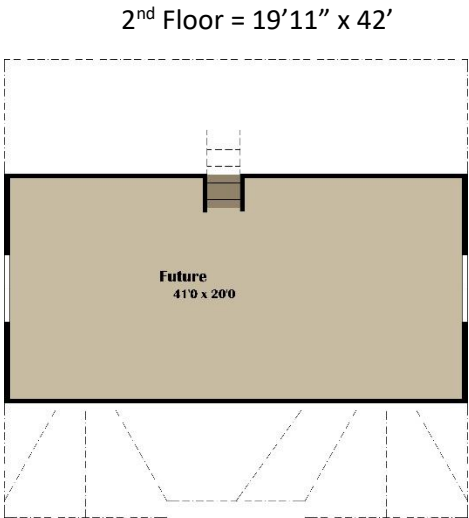
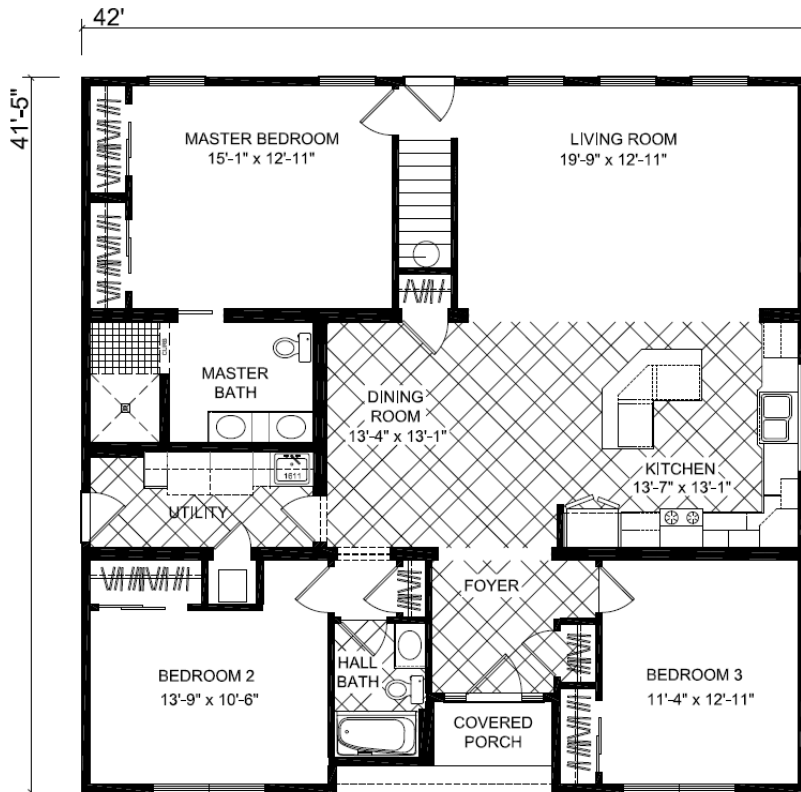


Charleston

Approx. 2,530 Sq. Ft. (1,695 + 835)
3 Bedroom | 2 Bathroom on 1st Floor



Charleston

Approx. 2,530 Sq. Ft (1,695 + 835)
3 Bedroom | 2 Bathroom on 1st Floor

Our Price Includes

- Dig & Pour Concrete Footer
- 5 Rows 8" Standard Block Foundation
- Normal Delivery to Site
- Crane Set on Foundation (up to 90 Ton)
- Finished Interior: Drywall, Flooring, & Trim
- Finished Exterior: Shingles, Siding, & Trim
- Electric Heat Pump w/ A/C & Furnace
- Kitchen Appliances
- WV Sales Tax
- Electric Water Heater
- Water & Drain Connections Under Home
- 1 year Service Warranty
- 10 year Limited Structural Warranty

Items Not Included

(except as options or allowances)

- Building Permit
- Electrical Meter Base & Mast Kit
- Utility lines to home – water, gas, sewer
- Steps, Decks, or Porches
- Site Clearing & Driveways
- Backfill, Drains, & Gutters
- Furniture, Paint, & Décor
- Ceiling Fans
- Exterior flood lights
- Landscaping
- Crawl Space Door

Standard Build Features

- Exterior Walls: 2x6" on 16" Centers
- Floor: 2x11-7/8" Truss on 16" Centers
 - ¾" OSB Deck
- R-38 Ceiling Insulation
- R-30 Floor Insulation
- R-21 Wall Insulation
- ThermaTru (by Andersen) Exterior Doors
- Silverline (by Andersen) Double Hung Windows
- 30 year Architectural Shingles (IKO)
- Georgia Pacific Siding
- Shaw 25 oz. Carpet

Renderings/pictures may show additional options not included in price. Refer to working drawings for actual dimensions. Specifications and pricing are subject to change without notice. These specifications are general only and may vary depending on floor plan and personalized features chosen.

Suggested Features (as shown)

| | |
|---|---|
| BASIC HOUSE PRICE Standard Trim, Flooring, Exterior | \$ 172,650 (\$ 101.86 / Sq. Ft.) (\$ 84.05/ Sq.Ft Finished 2 nd Floor) |
| Exterior Options Reverse Gable Dormers, Upgrade siding, Picture window, Upgrade front door w/ sidelites | \$ 15,010 |
| Kitchen Options French Door Fridge, Undermount sink, mosaic backsplash, staggered height cabinets, stem lights | \$ 2,590 |
| Interior Options 8'8" Ceilings, Renaissance Trim, Pocket door, Chair Rail, Crown Molding, Tray Ceiling in Foyer | \$ 8,055 |
| Flooring Options Hardwood Floors- Kitchen & D/R, upgrade carpet & pad | \$ 6,400 |
| Master Bath Options Versailles Shower, Mosaic backsplash, linen cabinet | \$ 5,255 |
| Miscellaneous Options Additional cabinets in utility, Utility sink w/base, floodlight j/b in corners, Cape utility prep, Cape Close-off | \$ 4,940 |
| | |
| SUBTOTAL Finished 1st Floor only | \$ 214,900 |
| ON SITE ADDITIONAL OPTIONS Finished 2 nd Floor: Carpet/vinyl, Standard Trim, 1 Bathroom w/ 32" shower | \$40,000 |
| TOTAL | \$ 254,900 |

Estimated Payment Range

Based on 30 year Fixed, 5-6% rate, 0% down.
For informational purposes only. Lender will determine actual rate, terms and payment.

\$ 1,368 - \$1,528

\$ per Square Foot

\$ 100.75

Notes: