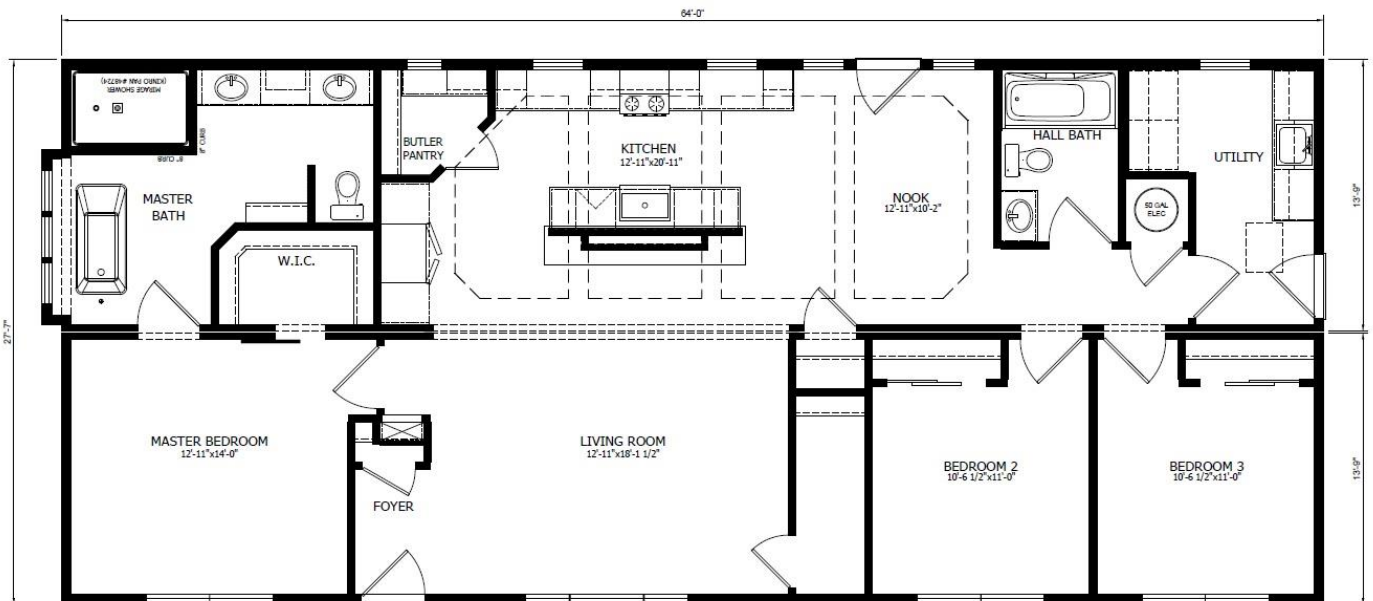


Princeton II

Approx. 1,795 Sq. Ft
3 Bedroom | 2 Bathroom



Princeton II

Approx. 1,795 Sq. Ft
3 Bedroom | 2 Bathroom

Our Price Includes

- Dig & Pour Concrete Footer
- 5 Rows 8" Standard Block Foundation
- Normal Delivery to Site + House Tug
- Crane Set on Foundation
- Finished Interior: Drywall, Flooring, & Trim
- Finished Exterior: Shingles, Siding, & Trim
- Electric Heat Pump w/ A/C & Furnace
- Kitchen Appliances
- WV Sales Tax
- Electric Water Heater
- Water & Drain Connections Under Home
- 1 year Service Warranty
- 10 year Limited Structural Warranty

Items Not Included

(except as options or allowances)

- Building Permit
- Electrical Meter Base & Mast Kit
- Utility lines to home – water, gas, sewer
- Steps, Decks, or Porches
- Site Clearing & Driveways
- Backfill, Drains, & Gutters
- Furniture, Paint, & Décor
- Ceiling Fans (wire/brace/switch is optional)
- Exterior flood lights
- Landscaping
- Crawl Space Door

Standard Build Features

- Exterior Walls: 2x6" on 16" Centers
- Floor: 2x11-7/8" Truss on 16" Centers
 - ¾" OSB Deck
- R-38 Ceiling Insulation
- R-30 Floor Insulation
- R-21 Wall Insulation
- ThermaTru (by Andersen) Exterior Doors
- Silverline (by Andersen) Double Hung Windows
- 30 year Architectural Shingles (IKO)
- Georgia Pacific Siding
- Shaw 25 oz. Carpet

Renderings/pictures may show additional options not included in price. Refer to working drawings for actual dimensions. Specifications and pricing are subject to change without notice. These specifications are general only and may vary depending on floor plan and personalized features chosen.

Suggested Features (as shown)

BASIC HOUSE PRICE Standard Trim, Flooring, Exterior	\$ 197,637 (\$ 110.29 / Sq. Ft.)
Construction Options 7/12 Non-storage ILO 5/12	\$ 4,694
Exterior Options 4400 Series Premium Siding, Clay trim package, Radiant spa window package, upgrade front door	\$ 7,421
Interior Options 8'8" Ceiling, Barn Door, Ship Lap	\$ 5,854
Flooring Options COREtec Pro Plus in L/R, Kit, D/R, Utility; upgrade carpet in bedrooms	\$ 6,961
Kitchen Options Hickory Cabinets	\$ 2,600
Master Bath Options Hickory cabinets, Radiant Spa Freestanding tub	\$ 2,900
Hall Bath Options Hickory Cabinets	\$ 145
Laundry/Util.Options Hickory Cabinets, Utility Sink	\$ 1,175
Miscellaneous Add (6) LED Lights, Exterior Faucet, 50 gallon W/H	\$ 1,201
TOTAL	\$ 230,588
ON SITE ADDITIONAL OPTIONS 10' x 24' reverse gable porch w/ full brow	\$ 19,495

Estimated Payment Range

Based on 30 year Fixed, 4-5% rate, 0% down.
For informational purposes only. Lender will
determine actual rate, terms and payment.

\$ 1,101 - \$ 1,238

\$ per Square Foot

(excluding on site additional options)

\$ 128.68

Notes:

This price is an ESTIMATE ONLY. Due to current volatility with lumber and other commodities, pricing is subject to change. A current QUOTE would be developed at time of contract.